



Minot State
UNIVERSITY

ACADEMIC ADVISING NEWSLETTER

APRIL 2016

Seeking Nominations for MSU Outstanding Academic Advisor Awards

The Academic Advising Council is seeking nominations for the 2015-16 Minot State University Outstanding Academic Advisor Awards. These awards are designed to highlight the importance of academic advising and bring recognition to academic advisors at MSU who have made significant contributions to academic advising and student success. More information regarding the award categories, selection criteria, eligibility, nomination procedure, selection process, and recognition can be found at <http://www.minotstateu.edu/advising/awards.shtml>. Nominations are due by Friday, April 15 at 4:30 p.m. Questions regarding these awards or the nomination process should be addressed to Dr. Lori Willoughby or Heather Martin, co-chairs of the Academic Advising Council.

Fall 2016 FYE Learning Communities

The fall 2016 First Year Experience Learning Community information is available on the Center for Engaged Teaching and Learning website, <http://www.minotstateu.edu/cetl/LearningCommunities.shtml>. Current students who still need to take a FYE must meet with their academic advisor, select a FYE, and then email elizabeth.odahlen@minotstateu.edu requesting to be enrolled in the specific learning community. CETL will work with the Registrar's Office who will enroll the students in the learning community courses. Please call CETL at 858-4040 with questions about the learning communities and/or the enrollment process.

DATES TO REMEMBER

Friday, April 8

Last day to drop

Wednesday, April 13

Advising Webinar
Hartnett Hall @ 1:00 P.M.

May 9 – 13

Final exams

Friday, May 13

Commencement
MSU Dome @ 10:00 A.M.

Quote of the Month

“Academic advisors mediate the dissonance between what students expect from the educational environment and what they experience in that environment.”

— Habley, Wes. (1981). ‘Academic Advising: Critical Link in Student Retention.’ *NASPA Journal*, 28(4):45-50.

2016 CONNECT/Orientation Dates & Advising Information

New freshman and transfer students are invited to attend one of the 2016 CONNECT/Orientation sessions where a portion of the afternoon will consist of meeting with an academic advisor and registering for classes. Specific dates have been designated for freshmen and transfer students, with the exception of July 22 when these students will attend on the same day.

Freshman Dates:

Friday, April 29
Tuesday, June 7
Wednesday, June 22
Thursday, June 23
Friday, July 22
(includes transfers)
Friday, August 19

Transfer Dates:

Monday, June 6
Friday, June 24
Friday, July 22
(includes freshmen)
Thursday, August 18

Benefits of using the Academic Requirement Report

There are many reasons why the Academic Requirements Report in Campus Connection is a great resource and should be utilized by both academic advisors and advisees. A few of the reasons are highlighted below:

- Determining official catalog year. When viewing the pdf version of the report, the catalog year is found near the upper left corner of the document.
- Reviewing university requirements. This report allows advisors and advisees to review all university requirements for graduation including: GPA, total credits, credits from a 4 year college/university, credits from MSU, General Education Requirements, major/minor/concentration requirements, and electives. The report will indicate in each of these areas if the requirements have been satisfied or are not satisfied.
- Viewing a list of possible General Education classes for areas not satisfied. When General Education Requirements are not satisfied, a list of available classes under each category is available in the Academic Requirement Report. Classes can be selected in the report to view more details about the courses including necessary enrollment requirements (pre/co-requisites), course descriptions, and class sections for previous, current, and upcoming semesters.

- Confirming all required classes for major, minor, and/or concentration have been satisfied. All classes required in these categories are listed in the report and additional course details are available for each class, as well.

CONNECT Advisor Information Sessions

All faculty who will be advising at the 2016 CONNECT sessions are asked to participate in a CONNECT Advisor Information Session held in April. All information sessions will be held in the Gordon B. Olson Library, as advising and registration at the upcoming 2016 CONNECT sessions will be held in the library. The information sessions will include more details regarding the change of venue. These sessions will also provide participants with an overview of topics pertaining to academic advisement, some of which will include an update of fall semester First-Year Experience Learning Communities, overview of developmental courses, information regarding Math & English COMPASS testing and placement guidelines, phone advising procedures, and additional information to assist faculty with advising at the upcoming CONNECT sessions. Individuals who are not advising at CONNECT are also welcome to attend one of the sessions. In addition to information specifically pertaining to advising at CONNECT, there will be general advising information presented which may be useful for any advisor working with new students. Information sessions are scheduled on the following dates/times.

Friday, April 22

8:00 – 10:00am
Lower Level, Library

Monday, April 25

2:00 – 4:00pm
Lower Level, Library

Thursday, April 28

12:30-2:30pm
Lower Level, Library

Those individuals planning to attend are asked to contact Heather Martin at heather.martin@minotstateu.edu to let her know which session they will be attending. Also, faculty are asked to let Heather know if they are interested but unable to attend one of the scheduled sessions, as additional sessions may be planned.

College Student Inventory (CSI) Summary Results

The College Student Inventory (CSI) is a useful early intervention tool providing academic advisors with advisees' needs, strengths, attitudes, motivational patterns, resources, coping mechanisms, and receptivity to intervention. This instrument also allows the university to gather information about the new freshmen class as a whole and generate reports to assist offices in the work they do to promote student success. Some individuals across campus may not be familiar with the data compiled from the CSI. Each year the MSU Institutional Research Office prepares the CSI Annual Outcomes Survey Summary which includes a breakdown of data in a variety of categories from the CSI from the past 7 years. To see these details, and more, the current summary is available at <http://www.minotstateu.edu/instplan/pdf/csisummaryresults2008-2015.pdf>

Early Registration & Priority Registration

Early registration for the fall semester was held March 22 – 24, which means all current students are now eligible to enroll for both the summer and fall terms, given they have no holds preventing registration transactions. If you have advisees that have not registered, please take a minute to reach out to those students to assist them with course selection and registration.

Did you know that some student populations are given priority registration and have the opportunity to register for classes before other students? Those students who have priority registration include students working with Disability Services, the Veteran's Center, POWER, and those accepted to the Honors Program.

In future semesters, please remind your advisees, and stress the importance, of both early registration and priority registration for the students who qualify.

DCB Schedule for ASC Courses on the MSU Campus

The Fall 2016 Collaborative Course Schedule through Dakota College at Bottineau is available in the table below. Students requesting enrollment into one of these sections must review the collaborative course information and submit the online collaborative request form found at <http://www.minotstateu.edu/online/collaborative.shtml>.

COURSE #	COURSE TITLE	CREDITS	CLASS #	MEETING TIME	BUILDING/ ROOM	INSTRUCTOR
ASC 87	College Writing Prep	3	16513	10:00 – 10:50 MWF	Crane Learning Center	Bail, M.
ASC 87	College Writing Prep	3	16559	1:00-2:15 TuTh	HHall 312	Bail, M.
ASC 88	Composition Lab	1	16538	12:00-12:50 M	HHall 316	Bail, M.
ASC 88	Composition Lab	1	16539	12:00-12:50 W	HHall 316	Bail, M.
ASC 88	Composition Lab	1	16540	12:00-12:50 F	HHall 316	Bail, M.
ASC 88	Composition Lab	1	16541	3:00-3:50 Tu	Mem 228	Bail, M.
ASC 88	Composition Lab	1	16475	2:00 – 2:50 W	Main 314	Bail, M.
ASC 94	Beginning Algebra	3	16566	11:00-12:15 TuTh	Mem 228	Staff
ASC 94	Beginning Algebra	3	16567	10:00 – 10:50 MWF	Mem 228	Staff
ASC 94	Beginning Algebra	3	16568	9:30 – 10:45 TuTh	Mem 228	Staff

Online Form to Change Major/Minor

Students who want to change their major/minor should submit the online Major/Minor Change Form found on the Registrar's Office website under Forms. The direct link to the online form is available at https://www.minotstateu.edu/secure_pages/registrar/maj_min_change.shtml. Students do not need to physically go to the Registrar's Office to complete the form.

MSU Bookstore's Price Matching

The bookstore will be price matching Amazon.com and bncollege.com this coming fall. We will match if the book if it is in stock. If you purchase a book you have up to 7 days to bring it back to do a price match. We will not price match Marketplace orders or Amazon Warehouse Deals.

Which of my Advisees are Required to Complete the Diversity Requirements?

Students who started at MSU prior to Fall 2014 who have been attending consecutive fall and spring semesters must satisfy the Diversity Requirements, completing one General Education Diversity course and one Graduation Diversity course. Students who started in the Fall 2014 or later, as new or returning students, are not required to complete the Diversity Requirements as they have been incorporated into the new General Education requirements.

Updating CONNECT Advisor Manuals

The Center for Engaged Teaching and Learning (CETL) is in the process of updating the CONNECT Advisor Manuals. If you have a manual in your office from last year, please write your name on the front cover and drop it off in CETL (Old Main, Rm 101) so new, updated information can be added. For those faculty who are interested in having your own copy of this manual, please send an email to Heather Martin to let her know of your request. If you have a manual, we do ask that you bring it to the CONNECT Advisor Information Session you attend in April and the CONNECT sessions you advise at throughout the summer.

Available Advising Resources in CETL

A variety of academic advising resources are available for faculty and staff to check out in the Center for Engaged Teaching and Learning (CETL). Many of the resources are from the National Academic Advising Association (NACADA) and include webinars, pocket guides, journals, monograph series, and books. Individuals who are interested in viewing the complete list of resources should contact Heather Martin in CETL at heather.martin@minotstateu.edu or 858-3265 or visit CETL in Old Main, Room 101.

Policy on Repeating Courses

Students may repeat courses taken at Minot State or those originally taken at another institution, but should be aware of the following guidelines:

- All courses must be repeated through MSU for an improved grade. Repeating a course at another institution will average both grades in GPA calculations. Both grades will be maintained on the student's transcript. Transfer courses must be equated to MSU courses and must have been completed prior to enrolling at MSU to be eligible for the repeat policy.
- When repeating a course through MSU, the most recent grade will be included in GPA calculations.
- Courses that have been failed in a face-to-face format cannot be repeated via correspondence.
- Students cannot repeat courses for an improved GPA after a degree has been posted.
- Transcripts will automatically reflect repeated courses upon conclusion of a semester. Students are asked to contact the Registrar's Office if they believe a repeated course has not been properly identified as a repeat on the transcript due to changes in course title or course numbering.

The student who wants to repeat a course no longer offered in the college curriculum must obtain permission to substitute a currently offered course from the chairperson of the division or department responsible for the original course.

Online Webinar Presentation

INTERSECTIONALITY: UNDERSTANDING OUR STUDENT'S MULTIFACETED IDENTITIES

Wednesday, April 13, 2016

1:00-2:00 P.M.

Location: Hartnett Hall, Rm 327

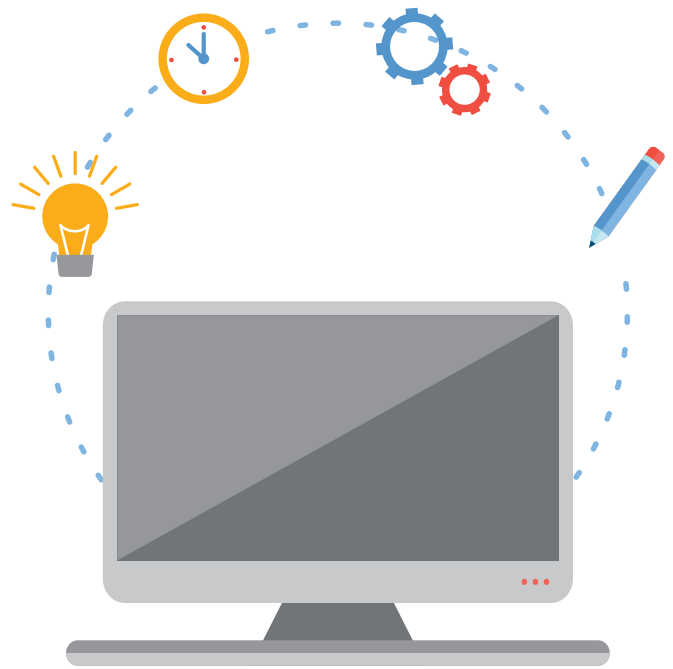
All welcome to attend!

Webinar Overview:

In April 2015, a team of panelists, sponsored by the NACADA Diversity Committee, came to the Webinar platform to discuss Academic Advising and Social Justice: Privilege, Diversity, and Student Success, laying the foundation for the topic in this venue. They shared information and discussed strategies designed to help advisors form stronger relationships with students, identify challenges and roadblocks faced by students, create individualized solutions to increase student success, and reconceptualize advising around issues of social justice.

Attendees for this event requested more information related to social justice and advising. One said, "I think it should be a series on social justice issues where you look at things in a particular way that will empower others." Our panelists agree, and therefore Sarah E. Stevens will return, joined by three new colleagues, to discuss how the concept of intersectionality can inform our relationships with students, our advising practices, and the ways in which we foster student success.

More information can be found at: <http://www.nacada.ksu.edu/Events-Programs/Events/Web-Events/Web-Events-Coming/Web-Event-April-2016.aspx#sthash.8tsj39SX.dpuf>



In advising, we often think about the separate needs of specific student populations. What we may fail to understand, however, is that none of our students possesses a single identity factor. Intersectionality provides an understanding of the multi-layered identities inhabited by our students (and ourselves). Grounded in reference to theorists such as Audre Lorde, Patricia Hill Collins, and Evangelina Holvino, our panel will consider how we can create our own intentionally intersectionalist approach to deepen both our understanding of student needs and our critical self-reflections as advisors.

ACADEMIC ADVISING COUNCIL

Laurie Geller, Mathematics & Computer Science

Christopher Keller, Biology

Melissa Spelchen, Criminal Justice/Honors Program

Jeanne MacDonald, Business Administration & Bismarck programs

Lori Willoughby, Business Information Technology

Don Burke, Addiction Studies, Psychology & Social Work

Linda Schaefer, Nursing

Heather Martin, Center for Engaged Teaching & Learning

Trisha Nelson, Center for Extended Learning

Eileen Solberg, College of Business

Steven Swenson, Athletics